



**Social Hall**  
P L A Z A  
at CITY CREEK

**OFFICE SPACE AVAILABLE  
IN SALT LAKE CITY**

FOR MORE INFORMATION PLEASE CONTACT

**Jordan Johnson**

801.321.8711

Jordan.Johnson@pripd.com

**150 East Social Hall Avenue,  
Salt Lake City, Utah 84111**

*Multi-tenant office building situated near one  
of the nation's largest mixed-use downtown  
redevelopment projects: City Creek Center.*



### **Address**

150 East Social Hall Avenue, Salt Lake City, Utah 84111

### **Social Hall Plaza Overview**

161,307 square feet

6 floors

Completed 1998

Remodeled in 2019

Social Hall Plaza at City Creek is a six-story, multi-tenant office building in the heart of Salt Lake City's central business district. Recently remodeled and updated lobby with added amenities, which include a fitness center with showers and a bike storage area. Social Hall Plaza features covered garage parking, close proximity to Harmon's Market, and provides nearby access to City Creek Center, one of the nation's largest and most acclaimed mixed-use downtown redevelopment projects. This unique environment features a retractable glass roof, the very popular City Creek Center food court, a creek that runs through the property, a pedestrian sky bridge and more. City Creek Center features world-class fashion and dining destinations with over 100 national stores and restaurants.

### **Parking**

Covered-executive parking below the building & multiple other options for parking needs at prevailing market rates

### **Public Transit**

Within easy walking distance to bus stations, TRAX stations, and Frontrunner stations

### **Fiber Optics**

Multiple carriers with dark fiber and extensive service options available

### **Elevators**

3 lobby elevators (including freight) and 2 parking elevators—all elevators updated in 2019

### **Life Safety**

Emergency generator that supplies power to the elevators, emergency lighting, and pressurization fans

### **Lease Rate**

Full service with base-year stop

### **Improvements**

Generous TI packages available



**NOW AVAILABLE** LEASING OPPORTUNITY IN THE CENTRAL BUSINESS DISTRICT OF SALT LAKE CITY



## Suite 200

**Rentable Square Feet:** 27,918

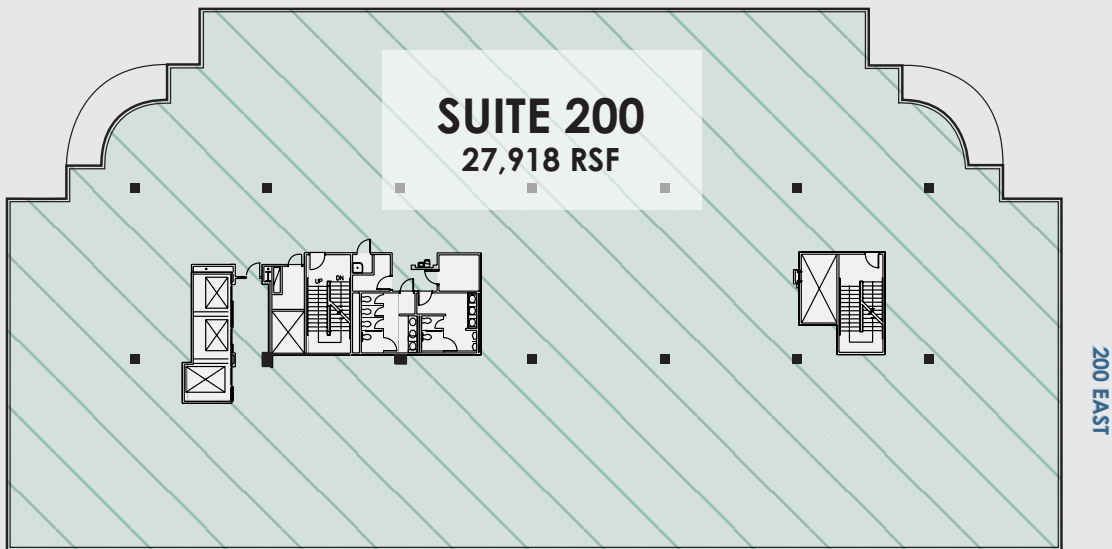
**Lease Rates:** \$29.50 - \$31.50/RSF

**Status:** Vacant

**Condition:** Gray shell with raised floors and ready for immediate build-out



SOCIAL HALL AVENUE



150 East Social Hall Avenue • Salt Lake City, Utah 84111



**NOW AVAILABLE** LEASING OPPORTUNITY IN THE CENTRAL BUSINESS DISTRICT OF SALT LAKE CITY



### Suite 300

**Rentable Square Feet:** 27,869

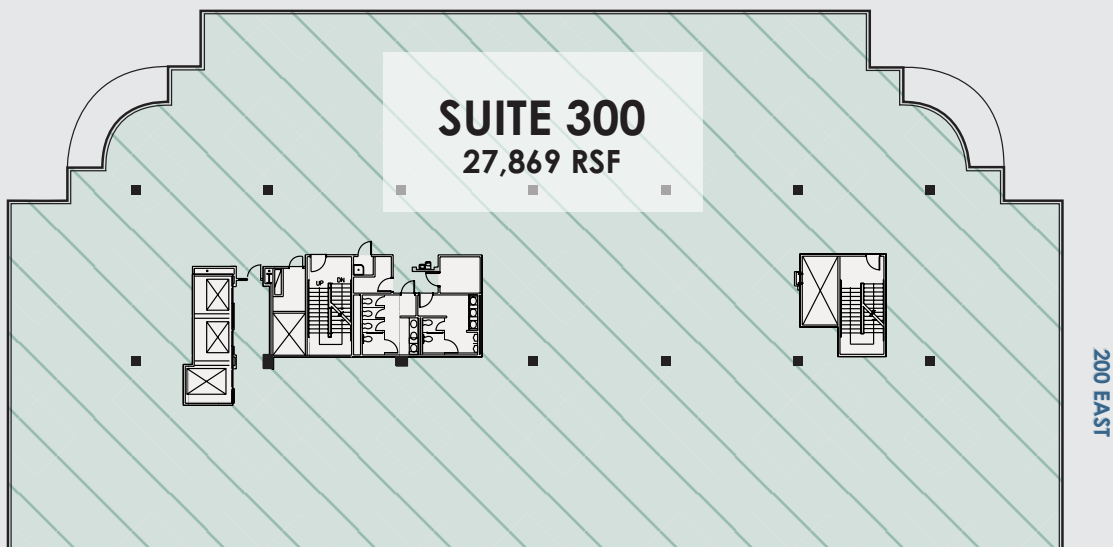
**Lease Rates:** \$31.00 - \$33.00/RSF

**Status:** Vacant

**Condition:** Gray shell with raised floors and ready for immediate build-out



SOCIAL HALL AVENUE



150 East Social Hall Avenue • Salt Lake City, Utah 84111

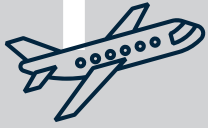


# In the Heart of Salt Lake City

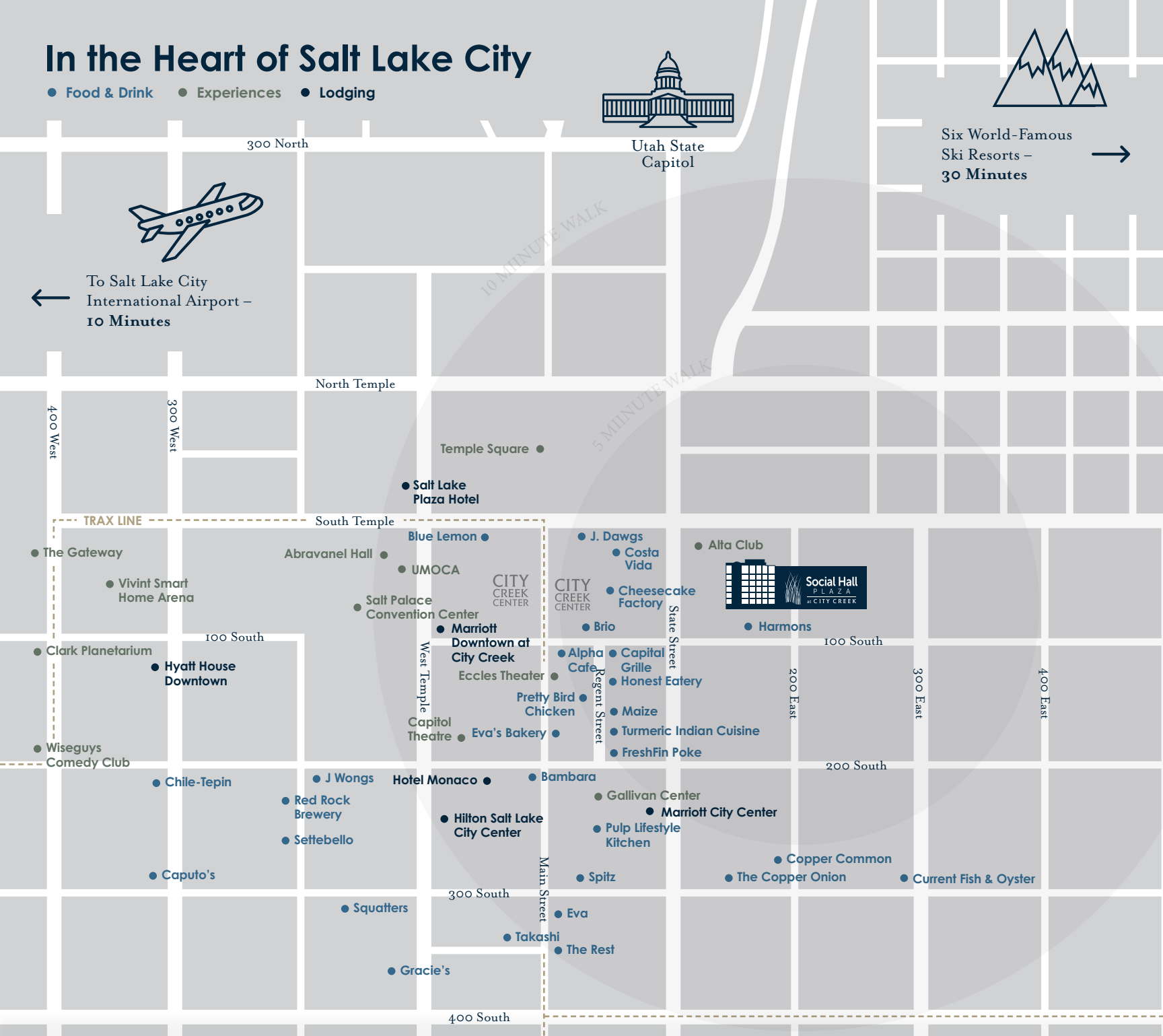
● Food & Drink ● Experiences ● Lodging



Six World-Famous  
Ski Resorts –  
30 Minutes →



← To Salt Lake City  
International Airport –  
10 Minutes



**Please Contact:**

Jordan Johnson  
Senior Leasing Manager  
City Creek Reserve, Inc.  
801.321.8711  
Jordan.Johnson@pripd.com



**Jordan Johnson**

801.321.8711  
Jordan.Johnson@pripd.com

The information in this document has been obtained from sources believed reliable. While City Creek Reserve, Inc. does not doubt it's accuracy, City Creek Reserve, Inc. has not verified it and makes no guarantee, warranty or representation about it. It is your responsibility to independently confirm its accuracy and completeness. Any projections, assumptions or estimates used are for example only and do not represent the current or future performance of the property. The value of this transaction to you depends on tax and other factors which should be evaluated by your tax, financial and legal advisors. You and your advisors should conduct a careful, independent investigation of the property to determine to your satisfaction the suitability of the property for your needs. City Creek Reserve, Inc. and the City Creek Reserve, Inc. logo are service marks of City Creek Reserve, Inc. and/or its affiliated or related companies in the United States and other countries. All other marks displayed on this document are the property of their respective owners. Photos herein are the property of their respective owners and use of these images without the express written consent of the owner is prohibited.