



**WORLD  
TRADE CENTER**  
at CITY CREEK

**CLASS-A OFFICE SPACE  
IN SALT LAKE CITY**

FOR MORE INFORMATION PLEASE CONTACT

**Jordan Johnson**

801.321.8711

[Jordan.Johnson@pripd.com](mailto:Jordan.Johnson@pripd.com)

**60 East South Temple  
Salt Lake City, Utah 84111**

*Class-A, multi-tenant office building with on-site management in the heart of one of the nation's largest mixed-use downtown redevelopment projects: City Creek Center.*



### **Address**

60 East South Temple, Salt Lake City, Utah 84111

### **World Trade Center at City Creek Overview**

384,451 square feet

22 stories

Remodeled in 2021

World Trade Center at City Creek is a Class-A, twenty-two story, multi-tenant office building with a prestigious South Temple address in the heart of Salt Lake City's central business district. The building includes a recent remodel of the main lobby/elevator system, new fitness center with showers, and expanded training conference areas. World Trade Center features onsite property management, covered garage parking, and convenient access to City Creek Center, one of the nation's largest and most acclaimed mixed-use downtown redevelopment projects. This unique environment features a retractable glass roof, the very popular City Creek Center food court, a creek that runs through the property, a pedestrian sky bridge and more. City Creek Center features world-class fashion and dining destinations with over 100 national stores and restaurants.

### **Parking**

Underground, covered, and surface parking available at prevailing market rates

### **Public Transit**

Within easy walking distance to bus stations, TRAX stations, and Frontrunner stations

### **Fiber Optics**

Multiple carriers with dark fiber and extensive service options available

### **Elevators**

Ten high-speed passenger elevators and one freight elevator - All elevators updated in 2020

### **Life Safety**

Emergency generator that supplies power to designated elevators, emergency lighting, and pressurization fans

### **Lease Rate**

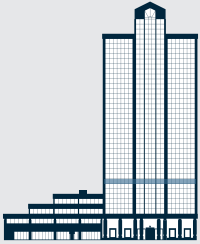
Full-service with base-year stop

### **Improvements**

Generous TI packages available



**NOW AVAILABLE** LEASING OPPORTUNITY IN THE CENTRAL BUSINESS DISTRICT OF SALT LAKE CITY



**Suite 500**

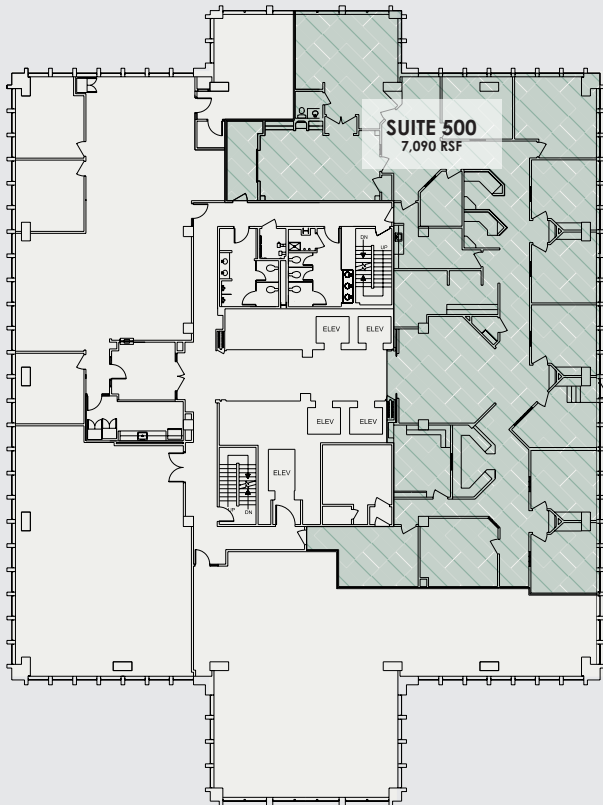
**Rentable Square Feet:** 7,090

**Lease Rates:** \$36.00–\$37.00/RSF

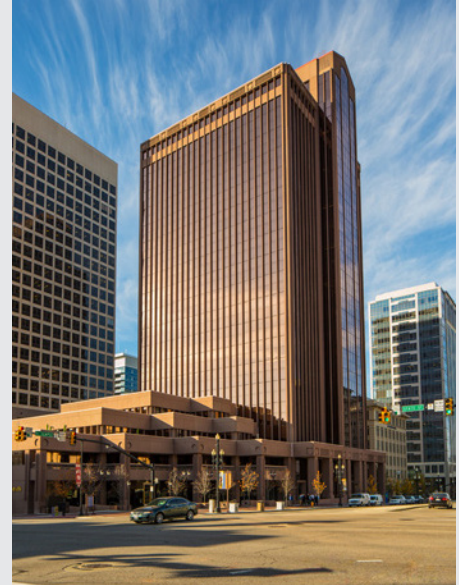
**Status:** Vacant

**Condition:** Prior tenant design still intact and ready for occupancy

SOUTH TEMPLE



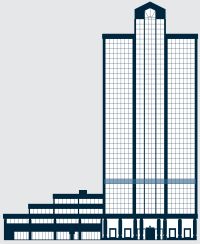
STATE STREET



60 East South Temple • Salt Lake City, Utah 84111



**NOW AVAILABLE** LEASING OPPORTUNITY IN THE CENTRAL BUSINESS DISTRICT OF SALT LAKE CITY



## Suite 585

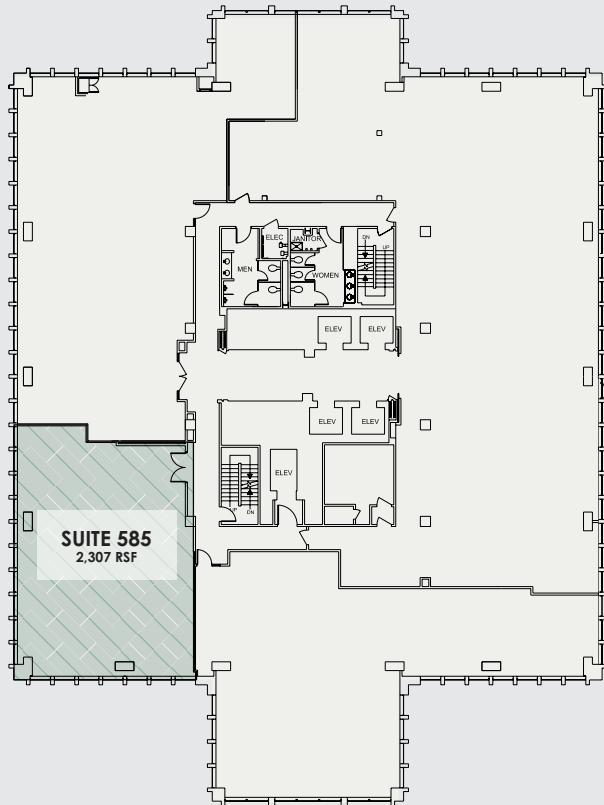
**Rentable Square Feet:** 2,307

**Lease Rates:** \$36.00–\$37.00/RSF

**Status:** Vacant

**Condition:** Prior tenant design still intact and ready for occupancy

SOUTH TEMPLE



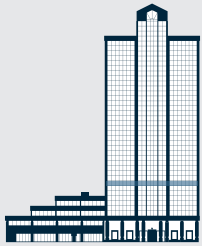
STATE STREET



60 East South Temple • Salt Lake City, Utah 84111



**NOW AVAILABLE** LEASING OPPORTUNITY IN THE CENTRAL BUSINESS DISTRICT OF SALT LAKE CITY



**Suite 960**

**Rentable Square Feet:** 1,750

**Lease Rates:** \$36.00–\$37.00/RSF

**Status:** Vacant

**Condition:** Ready for occupancy

SOUTH TEMPLE



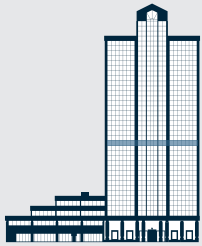
STATE STREET



60 East South Temple • Salt Lake City, Utah 84111



**NOW AVAILABLE** LEASING OPPORTUNITY IN THE CENTRAL BUSINESS DISTRICT OF SALT LAKE CITY



## Suite 1200

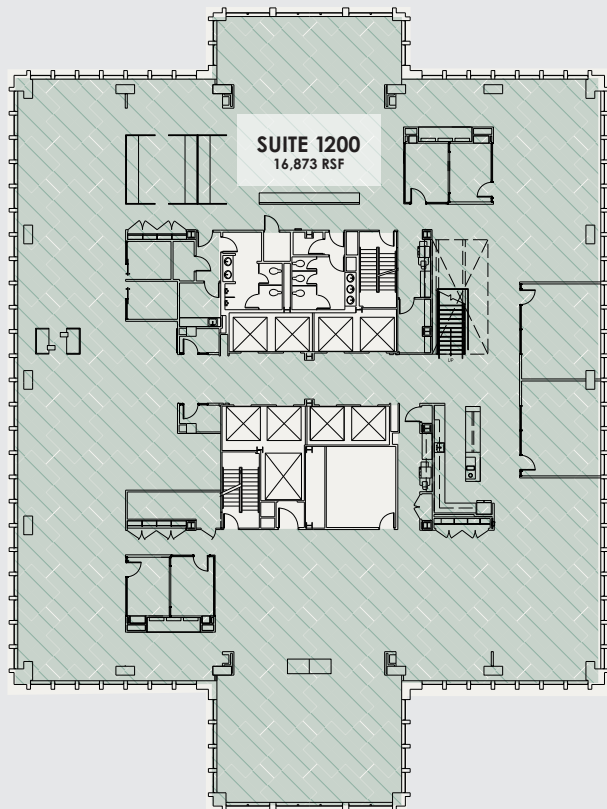
**Rentable Square Feet:** 16,615

**Lease Rates:** \$36.00–\$37.00/RSF

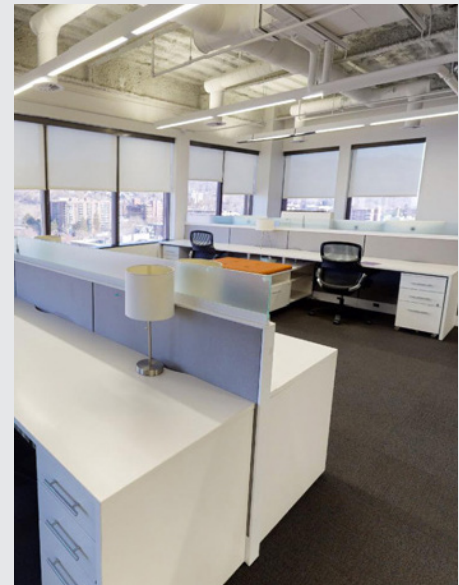
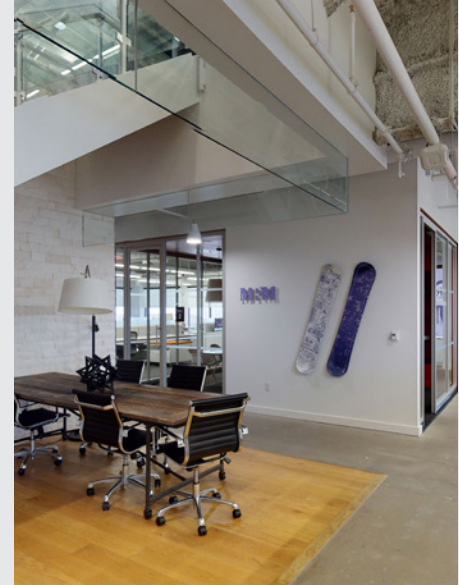
**Status:** Available April 1, 2023

**Condition:** Prior tenant design still intact and ready for occupancy

SOUTH TEMPLE



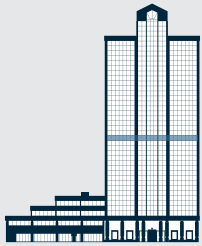
STATE STREET



60 East South Temple • Salt Lake City, Utah 84111



**NOW AVAILABLE** LEASING OPPORTUNITY IN THE CENTRAL BUSINESS DISTRICT OF SALT LAKE CITY



## Suite 1300

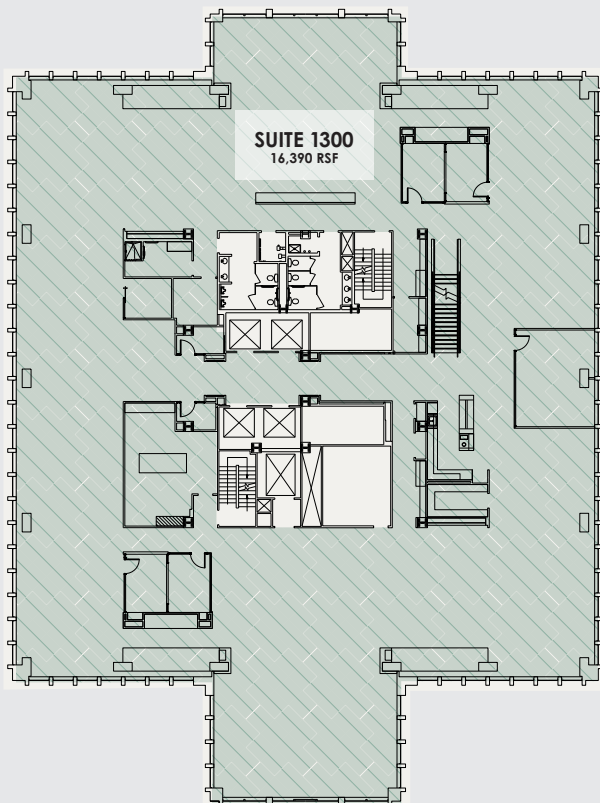
**Rentable Square Feet:** 16,390

**Lease Rates:** \$36.00–\$37.00/RSF

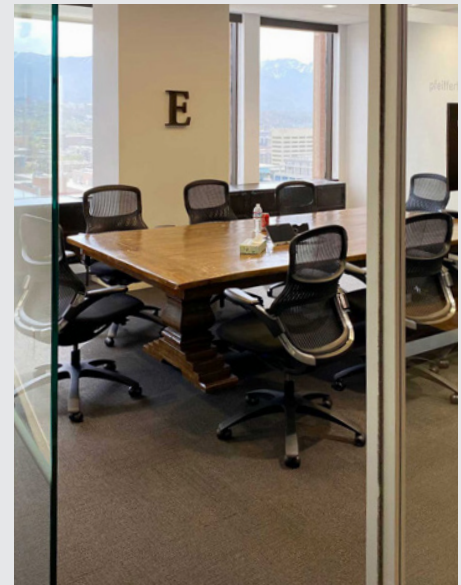
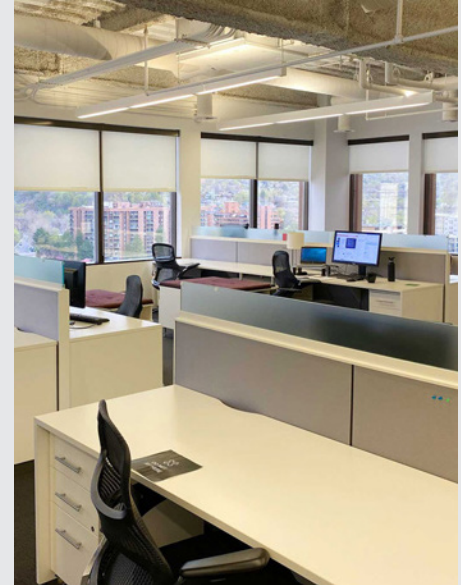
**Status:** Available April 1, 2023

**Condition:** Prior tenant design still intact and ready for occupancy

SOUTH TEMPLE



STATE STREET



60 East South Temple • Salt Lake City, Utah 84111



# In the Heart of Salt Lake City

● Food & Drink ● Experiences ● Lodging



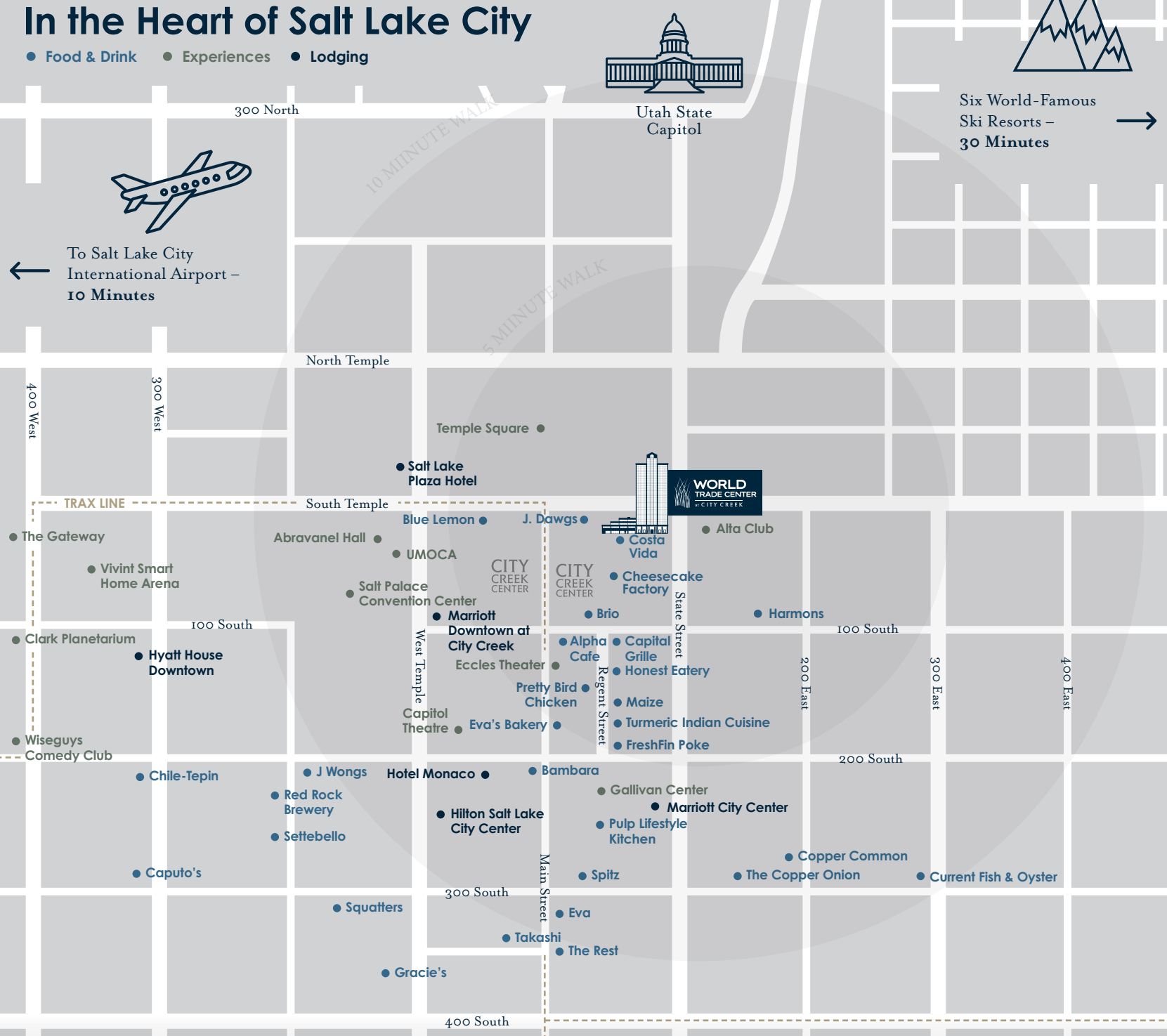
Utah State Capitol



Six World-Famous Ski Resorts – 30 Minutes →



← To Salt Lake City International Airport – 10 Minutes



## Please Contact:

Jordan Johnson  
 Senior Leasing Manager  
 City Creek Reserve, Inc.  
 801.321.8711  
[Jordan.Johnson@pripd.com](mailto:Jordan.Johnson@pripd.com)





**Jordan Johnson**

801.321.8711

[Jordan.Johnson@pripd.com](mailto:Jordan.Johnson@pripd.com)

The information in this document has been obtained from sources believed reliable. While City Creek Reserve, Inc. does not doubt it's accuracy, City Creek Reserve, Inc. has not verified it and makes no guarantee, warranty or representation about it. It is your responsibility to independently confirm its accuracy and completeness. Any projections, assumptions or estimates used are for example only and do not represent the current or future performance of the property. The value of this transaction to you depends on tax and other factors which should be evaluated by your tax, financial and legal advisors. You and your advisors should conduct a careful, independent investigation of the property to determine to your satisfaction the suitability of the property for your needs. City Creek Reserve, Inc. and the City Creek Reserve, Inc. logo are service marks of City Creek Reserve, Inc. and/or its affiliated or related companies in the United States and other countries. All other marks displayed on this document are the property of their respective owners. Photos herein are the property of their respective owners and use of these images without the express written consent of the owner is prohibited.