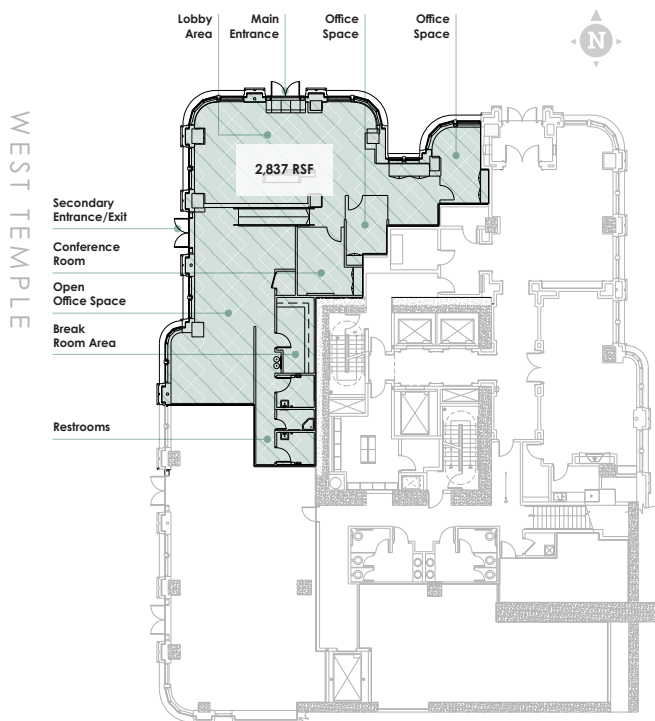


Prime Retail Space Ready for Lease Immediately

Conveniently situated at the foot of City Creek Center's west staircase, this fresh space is ready for its next big thing. Direct proximity to City Creek Center, Abravanel Hall, and Temple Square makes this a highly visible, heavily visited location.

SOUTH TEMPLE



FEATURES OF THE SPACE

2,837 square feet

Main entrance is located on South Temple Street in the first floor of the 99 West Condominiums

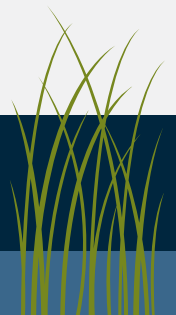
View of the historic Temple Square across the street

Restrooms located within space

Direct access to City Creek Center

900-1,100 office workers daily

Floor to ceiling glass lobby





South Temple/West Temple Corner



Secondary West Entrance/Exit



Front Lobby Area



Glass Office



60,000
office workers within
walking distance

750,000
visitors each year

A Part of City Creek, the Center of Downtown

Located in the cultural and central core of downtown Salt Lake City, City Creek is a four block collection of arts, living, entertainment, and office space that brings an eclectic mix of individual to its sidewalks daily.

Jordan D. Johnson
801.321.8711 | johnsonjd@pripd.com

