



RETAIL SPACE IN SALT LAKE CITY

FOR MORE INFORMATION PLEASE CONTACT

Jordan Johnson

801.321.8711

Jordan.Johnson@pripd.com

**60 East South Temple
Salt Lake City, Utah 84111**

*Et essimag nisque velignis sit officia consequi iberchi
tamet, simus eos ex es aut omnis nonsed et atemqua
spere, ut ommoluptatem iditati volorum quas rem qui
ut audamet ulparcium fugias.*



Address

Between 100–200 South Regent Street (50 East), Salt Lake City, Utah 84111

On Regent at City Creek Overview

Renovated in 2012.

An integral part of the 111 Main/Eccles Theater/Regent Street revitalization, On Regent establishes a dynamic destination location in Salt Lake City's premier office, theater, entertainment and retail district.

The Market

A major pedestrian connector between City Creek and Gallivan Center, On Regent's restaurants, and street cafes serve Eccles Theater patrons, 111 Main tenants, other downtown office workers, city visitors, and the special event and convention sectors.

- 3,000–4,000 111 Main office workers
- 60,000 other downtown office workers within walking distance
- 1,200 Regent Street parking stalls with multiple users per day
- 900–1,100 theater patrons

The Parking

The revitalized Regent Street Parking has 10 levels and offers 1,200 parking spaces. The north and south elevator lobbies feature new sleek glass entrances. A beautiful glass wall stairway inside the north elevator lobby will provide quick street access.

On Regent Amenities

- Landscaped, pedestrian friendly walkways
- Street lighting and well lit common areas
- Street-side seating
- Curbless street with integrated artistic elements
- Way-finding signage
- Bike racks
- On-street festival plaza
- Mid-block walkway to Main Street
- Revitalized Regent Street Parking Garage





NOW AVAILABLE LEASING OPPORTUNITY IN THE CENTRAL BUSINESS DISTRICT OF SALT LAKE CITY



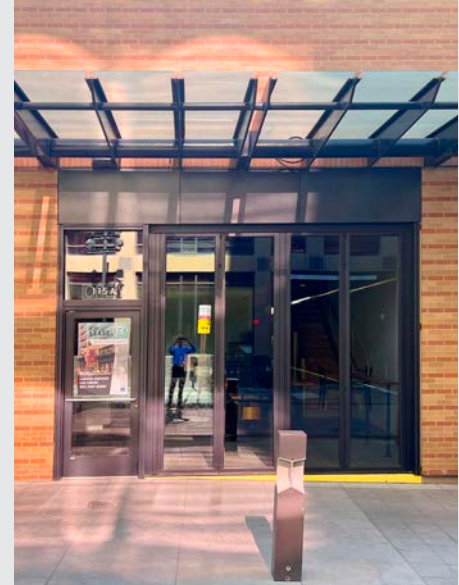
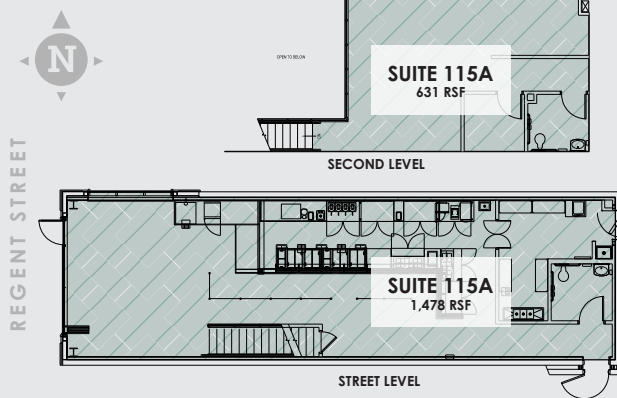
Suite 115-A

Rentable Square Feet: 1,478

Lease Rates: \$32.00–\$34.00/RSF

Status: Vacant

Condition: Prior tenant design still intact and ready for occupancy



Regent Street • Salt Lake City, Utah 84111

CITY CREEK

Jordan Johnson

801.321.8711
Jordan.Johnson@pripd.com





NOW AVAILABLE LEASING OPPORTUNITY IN THE CENTRAL BUSINESS DISTRICT OF SALT LAKE CITY



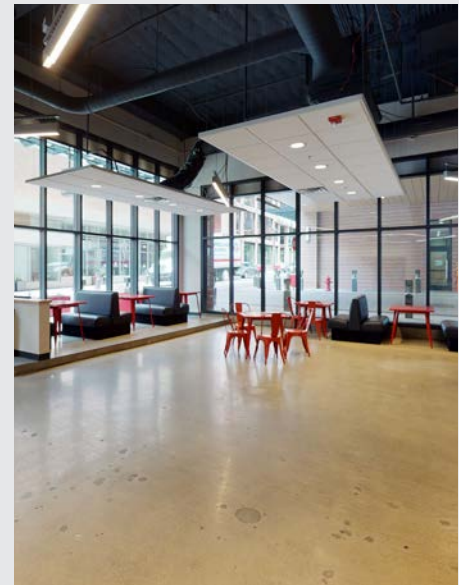
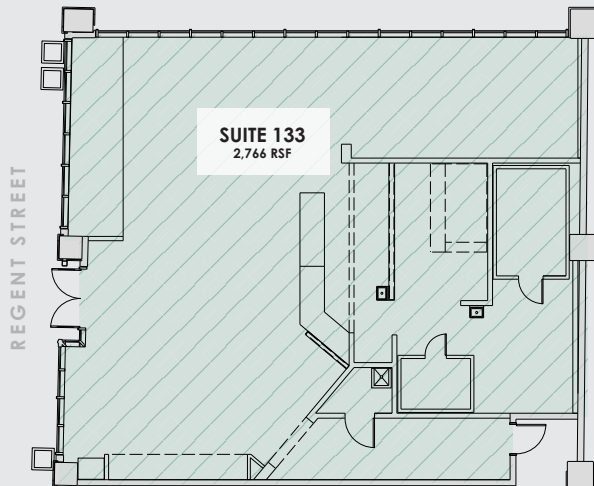
Suite 133

Rentable Square Feet: 2,766

Lease Rates: \$32.00–\$34.00/RSF

Status: Vacant

Condition: Prior tenant design still intact and ready for occupancy



Regent Street • Salt Lake City, Utah 84111

CITY CREEK

Jordan Johnson

801.321.8711
Jordan.Johnson@pripd.com





NOW AVAILABLE LEASING OPPORTUNITY IN THE CENTRAL BUSINESS DISTRICT OF SALT LAKE CITY



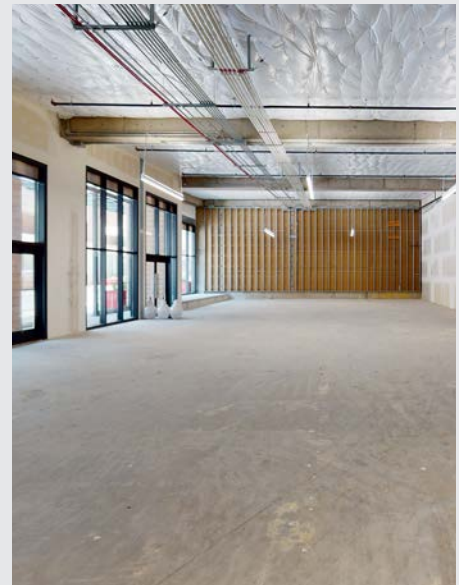
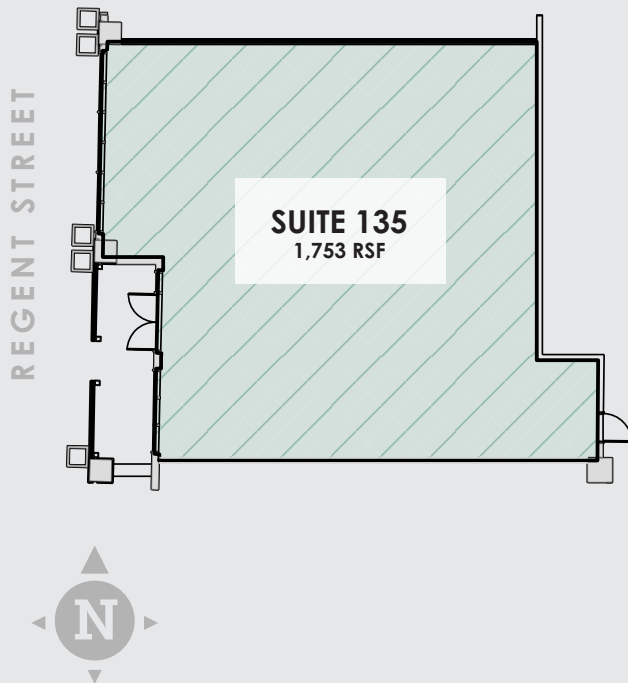
Suite 135

Rentable Square Feet: 1,753

Lease Rates: \$32.00–\$34.00/RSF

Status: Vacant

Condition: Grey shell and ready for immediate build out



Regent Street • Salt Lake City, Utah 84111

CITY CREEK

Jordan Johnson

801.321.8711
Jordan.Johnson@pripd.com





NOW AVAILABLE LEASING OPPORTUNITY IN THE CENTRAL BUSINESS DISTRICT OF SALT LAKE CITY



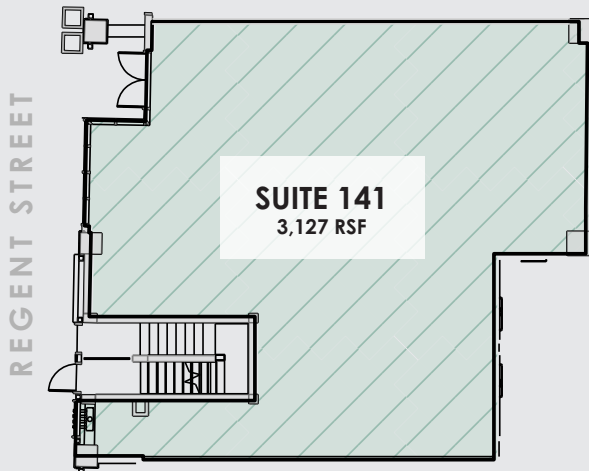
Suite 141

Rentable Square Feet: 3,127

Lease Rates: \$32.00–\$34.00/RSF

Status: Vacant

Condition: Grey shell and ready for immediate build out



Regent Street • Salt Lake City, Utah 84111

CITY CREEK

Jordan Johnson

801.321.8711
Jordan.Johnson@pripd.com





NOW AVAILABLE LEASING OPPORTUNITY IN THE CENTRAL BUSINESS DISTRICT OF SALT LAKE CITY



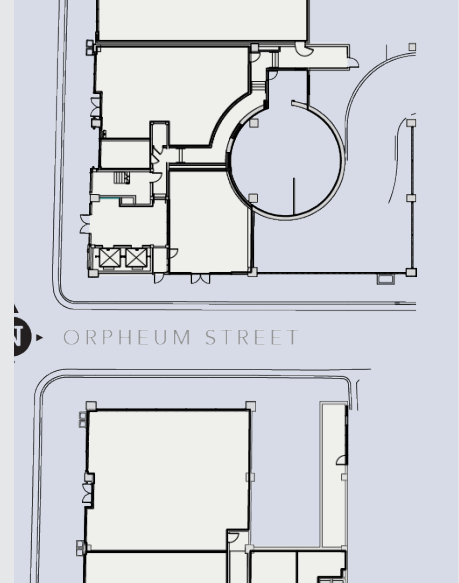
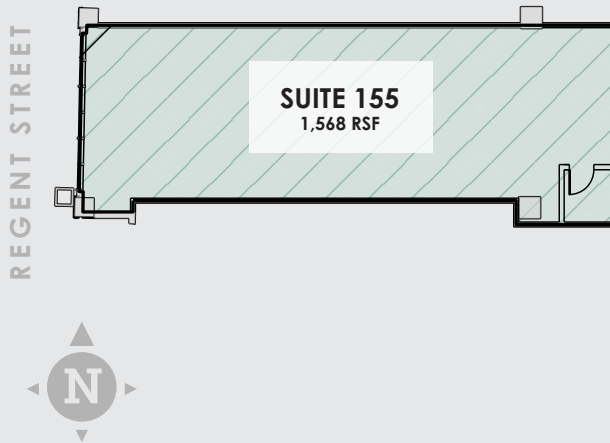
Suite 155

Rentable Square Feet: 1,568

Lease Rates: \$32.00–\$34.00/RSF

Status: Vacant

Condition: Grey shell and ready for immediate build out



Regent Street • Salt Lake City, Utah 84111

CITY CREEK

Jordan Johnson

801.321.8711
Jordan.Johnson@pripd.com





NOW AVAILABLE LEASING OPPORTUNITY IN THE CENTRAL BUSINESS DISTRICT OF SALT LAKE CITY



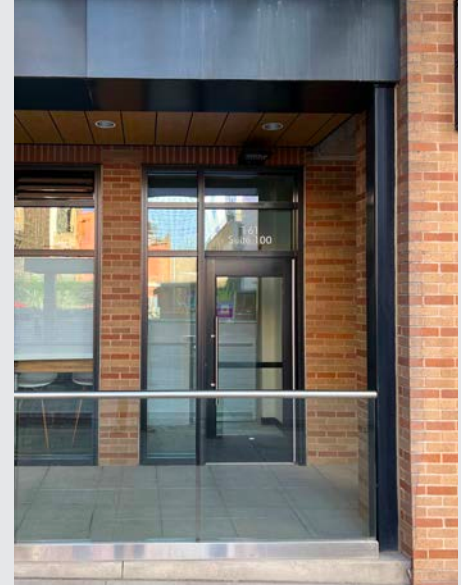
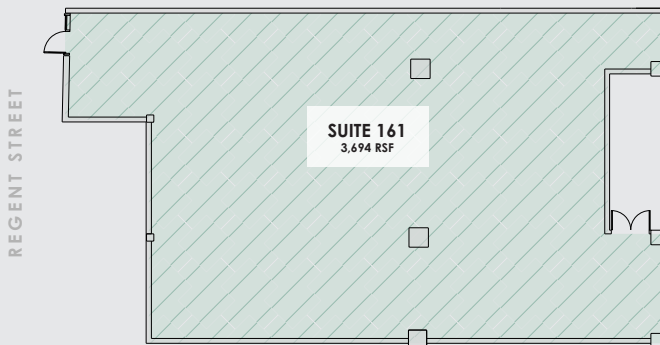
Suite 161

Rentable Square Feet: 3,694

Lease Rates: \$32.00–\$34.00/RSF

Status: Vacant

Condition: Prior tenant design still intact and ready for occupancy



Regent Street • Salt Lake City, Utah 84111

CITY CREEK

Jordan Johnson

801.321.8711
Jordan.Johnson@pripd.com



In the Heart of Salt Lake City

● Food & Drink ● Experiences ● Lodging



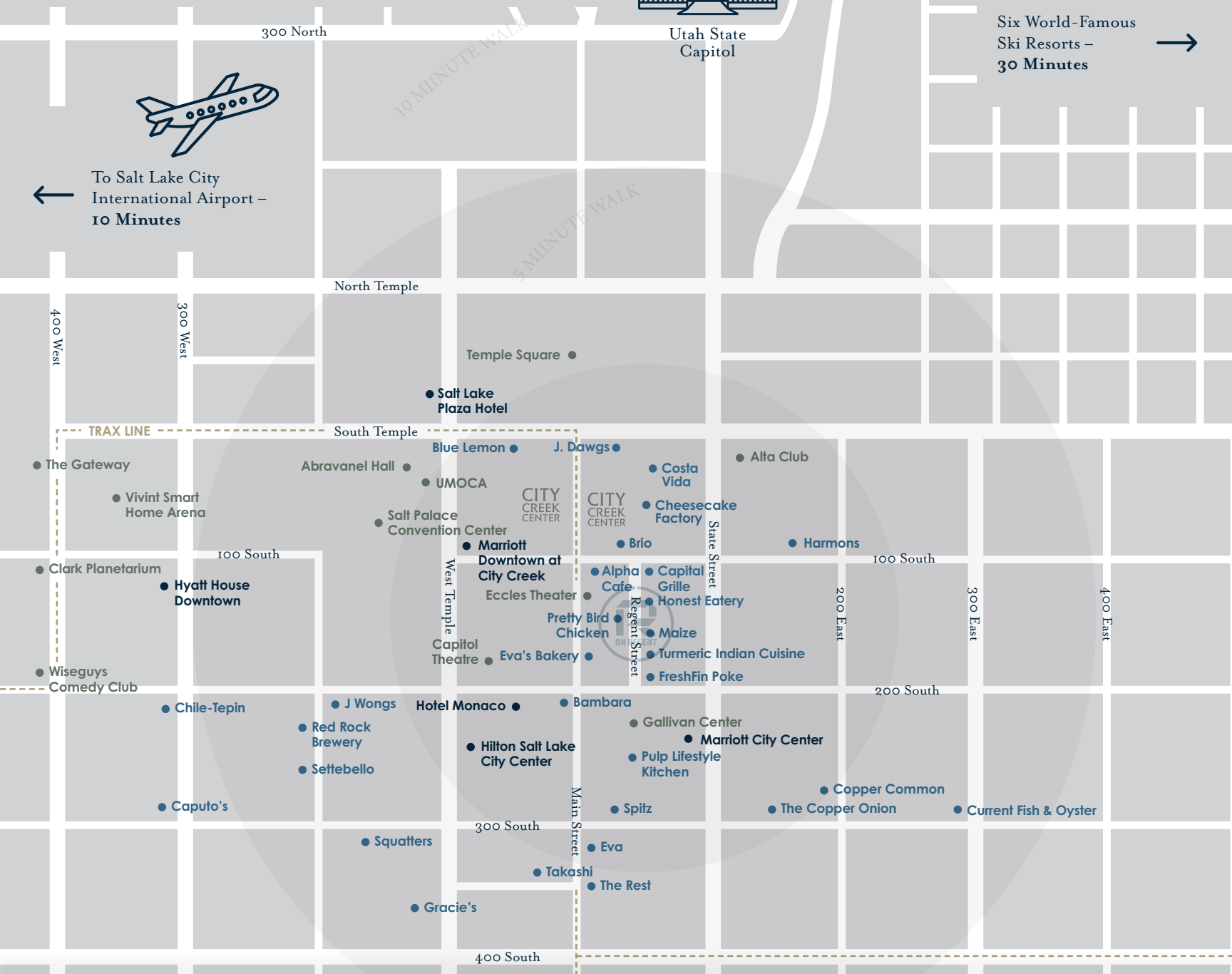
Utah State Capitol



Six World-Famous
Ski Resorts –
30 Minutes →



← To Salt Lake City
International Airport –
10 Minutes



Please Contact:

Jordan Johnson
Senior Leasing Manager
City Creek Reserve, Inc.
801.321.8711
Jordan.Johnson@pripd.com



Jordan Johnson

801.321.8711

Jordan.Johnson@pripd.com

The information in this document has been obtained from sources believed reliable. While City Creek Reserve, Inc. does not doubt it's accuracy, City Creek Reserve, Inc. has not verified it and makes no guarantee, warranty or representation about it. It is your responsibility to independently confirm its accuracy and completeness. Any projections, assumptions or estimates used are for example only and do not represent the current of future performance of the property. The value of this transaction to you depends on tax and other factors which should be evaluated by your tax, financial and legal advisors. You and your advisors should conduct a careful, independent investigation of the property to determine to your satisfaction the suitability of the property for your needs. City Creek Reserve, Inc. and the City Creek Reserve, Inc. logo are service marks of City Creek Reserve, Inc. and/or its affiliated or related companies in the United States and other countries. All other marks displayed on this document are the property of their respective owners. Photos herein are the property of their respective owners and use of these images without the express written consent of the owner is prohibited.